



**selt** ✨  
sun  
protection  
systems



# SERGE 600

WHITE - WHITE



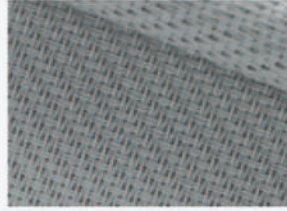
60002002

GREY - WHITE



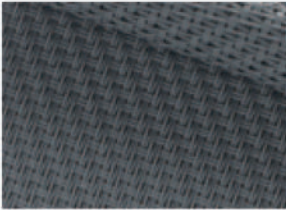
60001002

PEARL - GREY



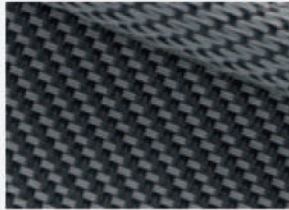
60007007

GREY - GREY



60001001

GREY - CHARCOAL



60001010

CHARCOAL - CHARCOAL

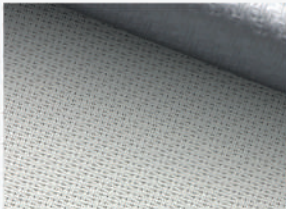


60010010

# SERGE 600

BO LUNAR

WHITE - WHITE



68O002002

WHITE - PEARL GREY



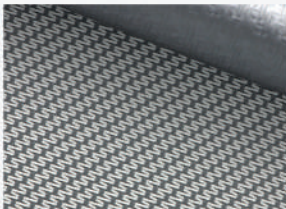
68O002007

PEARL GREY - PEARL GREY



68O007007

WHITE - GREY



68O001002

OYSTER SHELL



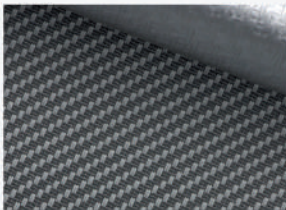
68O033001

GREY - GREY



68O001001

GREY - CHARCOAL



68O001010

CHARCOAL - CHARCOAL



68O010010

White - White	Tearing resistance (daN) UNE EN ISO 4674-1 method 2 - Warp: 8.5; Weft: 7.5 Breaking strength (daN/5cm) UNE EN ISO 1421 - Warp: 260; Weft: 225 Flame retardant - Certificate on request	42% glasfibre + 58% pvc	composition
Grey - White			weight [g/m <sup>2</sup> ]
Pearl - Grey			thickness [mm]
Grey - Grey			light fastness blue scale level EN ISO 105 B02 EN ISO 105 B04
Grey - Charcoal			openness factor [%]
Charcoal - Charcoal			TS [%]
			RS [%]
			AS [%]
			TV [%]
			interior / exterior
<b>SERGE 600</b>			

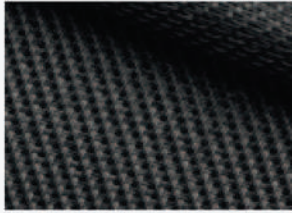
White - White	Tearing resistance (daN) UNE EN ISO 4674-1 method 2 - Warp: 8.5; Weft: 9 Breaking strength (daN/5cm) UNE EN ISO 1421 - Warp: 224.2; Weft: 176.6 Flame retardant - Certificate on request	33% GLASFIBRE 47% PVC 20% PVC LAMINATE	composition
White - Pearl Grey			weight [g/m <sup>2</sup> ]
Pearl Grey - Pearl Grey			thickness [mm]
White - Grey			light fastness blue scale level EN ISO 105 B04
Oyster Shell			openness factor [%]
Grey - Grey			TS [%]
Grey - Charcoal			RS [%]
Charcoal - Charcoal			AS [%]
			TV [%]
			interior / exterior
<b>SERGE 600 BO LUNAR</b>			





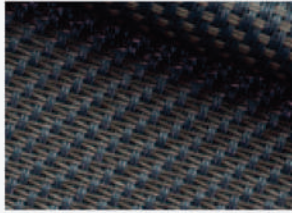
# SERGE 600

PURE BLACK



60030030

CHARCOAL - BRONZE



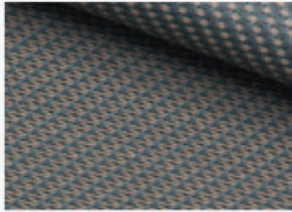
60010011

SANDSTONE



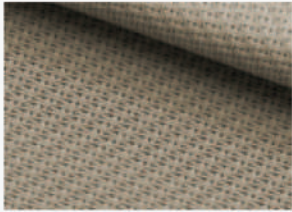
60033033

GREY - SAND



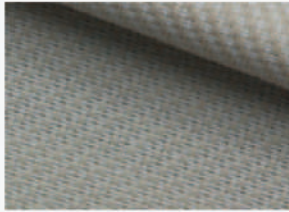
60001003

LINEN - LINEN



60008008

LINEN - WITE



60008002

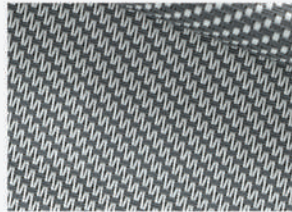
# SERGE 1%

WHITE - WHITE



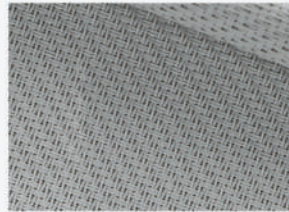
61002002

GREY - WHITE



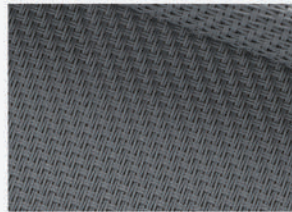
61001002

PEARL - GREY



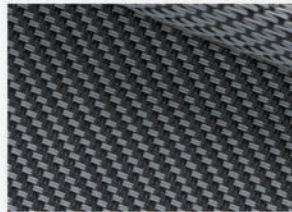
61007007

GREY - GREY



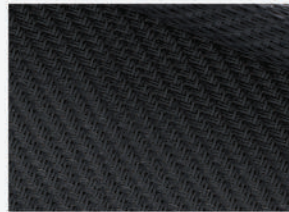
61001001

GREY - CHARCOAL



61001010

CHARCOAL - CHARCOAL



61001010

BRONZE - BRONZE



61011011

LINEN - LINEN



61008008

Pure Black	42% glasfibre + 58% pvc	composition	EN 14501					
Charcoal - Bronze			525	weight [g/m²]				
Sandstone			0.74	thickness [mm]	light fastness blue scale level EN ISO 105 B02 EN ISO 105 B04			
Grey - Sand			>7	openness factor [%]	TS [%]	RS [%]	AS [%]	TV [%]
Linen - Linen			5		5.9	3.7	90.4	5.9
Linen - Wite			15.5		6.1	6.5/6.0	87.4/87.9	6.1
Tearing resistance (dan) UNE EN ISO 4674-1 method 2 - Warp: 8.5; Weft: 7.5				7.1	20.4/20.5	72.4/72.5	6.8	
Breaking strength (dan/5cm) UNE EN ISO 1421 - Warp: 260; Weft: 225				4.7	26.5/21.5	68.8/73.8	4.5	
Flame retardant - Certificate on request				14.9	52.5/52.7	32.5/32.4	12.9	
				15.5	58.2/56.4	26.4/28.1	13.7	
				interior / exterior				
				application				
<b>SERGE 600</b>								

White - White	42% glasfibre + 58% pvc	composition	EN 14501					
Grey - White			638	weight [g/m²]				
Pearl - Grey			0.78	thickness [mm]	light fastness blue scale level EN ISO 105 B02 EN ISO 105 B04			
Grey - Grey			>7	openness factor [%]	TS [%]	RS [%]	AS [%]	TV [%]
Grey - Charcoal			1		1.28	71.3	15.9	12.9
Charcoal - Charcoal					2.2	44.8/31.2	53/66.6	2
Bronze - Bronze			2.8	36.9	60.3	2.1		
Linen - Linen			2.4	17.4	80.2	2.2		
Tearing resistance (dan) UNE EN ISO 4674-1 method 2 - Warp: 5.9; Weft: 6.2				1.2	10.5/7.4	88.3/84.8	1.2	
Breaking strength (dan/5cm) UNE EN ISO 1421 - Warp: 321; Weft: 277				1.1	5.9	93	1.1	
Flame retardant - Certificate on request				1.4	8.6	90	1.3	
			5.9	54.2	39.9	3.7		
				interior / exterior				
				application				
<b>SERGE 1%</b>								





## **Selt Systems, Inc.**

889 N Larch Ave, Elmhurst, IL 60126

Phone: +1 (630) 332 8600

Email: [contact@seltsystems.com](mailto:contact@seltsystems.com)

[seltsystems.com](http://seltsystems.com)